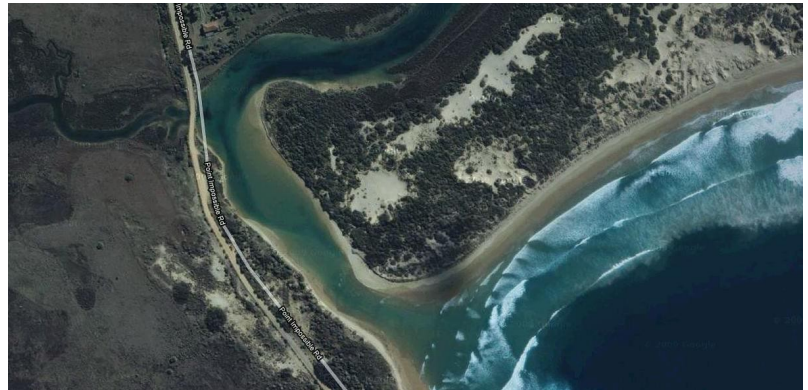


## Thompson Creek

### Characteristics:

<b>Type of Estuary:</b>	River
<b>Landscape Zone:</b>	Thompson
<b>Catchment Area:</b>	2,795 Ha
<b>Estuary Area:</b>	23.28 Ha
<b>Estuary Length:</b>	5.452 km
<b>River Length:</b>	48.390 km
<b>Mouth Direction:</b>	East facing
<b>Mouth State:</b>	Intermittently open
<b>Location:</b>	144°22'38.2661" E 38°18'10.6451" S
<b>Distance from Geelong:</b>	17.132 km South



### Supplementary Data:

**Estuary Watch**  
(P-Chem Data / Physical Observations)  
<http://www.estuarywatch.com.au/>

**Geelong City Council**  
<http://www.geelongaustralia.vic.gov.au/>

**Surf Coast Shire Council**  
<http://www.surfcoast.vic.gov.au/>

### Contact Information:

**Geelong City Council:**  
Phone: 03 5272 5272  
Website: [www.geelongaustralia.vic.gov.au](http://www.geelongaustralia.vic.gov.au)  
Email: [contactus@geelongcity.vic.gov.au](mailto:contactus@geelongcity.vic.gov.au)

**Surf Coast Shire Council:**  
Phone: 1300 610 600  
Website: [www.surfcoast.vic.gov.au](http://www.surfcoast.vic.gov.au)  
Email: [info@surfcoast.vic.gov.au](mailto:info@surfcoast.vic.gov.au)

## Thompson Creek

### Special Attributes

#### Zones:

- 88% of the catchment zoned as Rural.
- 4% of the catchment zoned as Public Conservation and Resource.
- 2% of the catchment zoned as Rural Living.
- 2% of the catchment zoned as Environmental Rural Living.
- 4% of the catchment zoned as Public Use, Special Use, Township, Comprehensive Development, Low Density Rural, and Public Park and Recreation.

#### Overlays:

- Environmental significance (covering the entire Thompson Creek and lowland marshes, Lake Modewarre and Brown Swamp).
- Land subject to inundation (Lake Modewarre margins and lowland marshes and floodplain of Thompson Creek).
- Vegetation protection (headwaters of Thompson and Merrigig Creeks).



#### Estuarine Vegetation

EVC Name	Area (Ha) (Approx.)	Geographic Occurrence	Conservation Status
Coastal Dune Scrub / Coastal Dune Grassland Mosaic	38.09	N/A	Depleted
Coastal Alkaline Scrub	30.80	Naturally Restricted	Endangered
Coastal Saltmarsh / Mangrove Shrubland Mosaic	325.96	N/A	Endangered
Grassy Woodland	60.28	Common	Endangered
Floodplain Riparian Woodland	72.48	Naturally Restricted	Endangered
Plains Grassland	69.45	Common	Endangered



### Key Management Issues:

**Yarra Pygmy Perch:** Listed as vulnerable because of widespread habitat degradation within its restricted range. This species is common in only a few places in Victoria but is not known to be abundant. Due to the wide distribution and abundance of Yarra Pygmy Perch in the Thompson Creek catchment, it is likely that the Thompson Creek population is significant in south-eastern Australia.