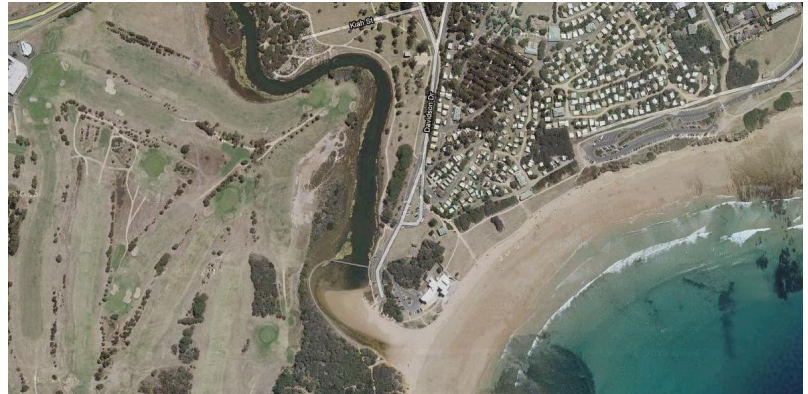


Spring Creek

Characteristics:

Type of Estuary:	River
Landscape Zone:	Thompson
Catchment Area:	153.0 Ha
Estuary Area:	4.101 Ha
Estuary Length:	2.061 km
River Length:	27.340 km
Mouth Direction:	East facing
Mouth Sate:	Intermittently open
Location:	144°19'7.2039" E 38°20'36.4184" S
Distance from Geelong:	21.340 km South West



Supplementary Data:

Estuary Watch
(P-Chem Data / Physical Observations)
<http://www.estuarywatch.com.au/>

Surf Coast Shire Council
<http://www.surfcoast.vic.gov.au/>

Contact Information:

Surf Coast Shire Council:
Phone: 1300 610 600
Website: www.surfcoast.vic.gov.au
Email: info@surfcoast.vic.gov.au

Spring Creek

Special Attributes

Zones:

Catchment primarily utilised for:

- Residential
- Rural
- Environmental Rural

Overlays:

- Significant landscape
- Vegetation protection
- Wildfire management



Estuarine Vegetation

EVC Name	Area (Ha) (Approx.)	Geographic Occurrence	Conservation Status
Coastal Head-land Scrub	4.18	Rare	Vulnerable
Coastal Alkaline Scrub	20.05	Naturally Restricted	Endangered
Grassy Wood-land	17.04	Common	Endangered
Swampy Ripar-ian Woodland	11.59	Common	Endangered

Key Management Issues:

Recreational Fishing: Estuary provides good fishing for black bream with other species including estuary perch, trevally and luderick.

Boating: Popular with amateur canoeists.

Camping: Torquay Caravan Park utilises large areas near the mouth of the estuary.

Passive Recreation: Popular place for walking (Boardwalk), swimming and relaxing. Golf is also prevalent with the Torquay Golf Course bordering Spring Creek to the West.

Tourism: Great Ocean Road is Victoria's second most popular tourist destination, attracting between 12 and 14 percent of all visitors within the state. Value of tourism in the GOR region is estimated at \$940 million.