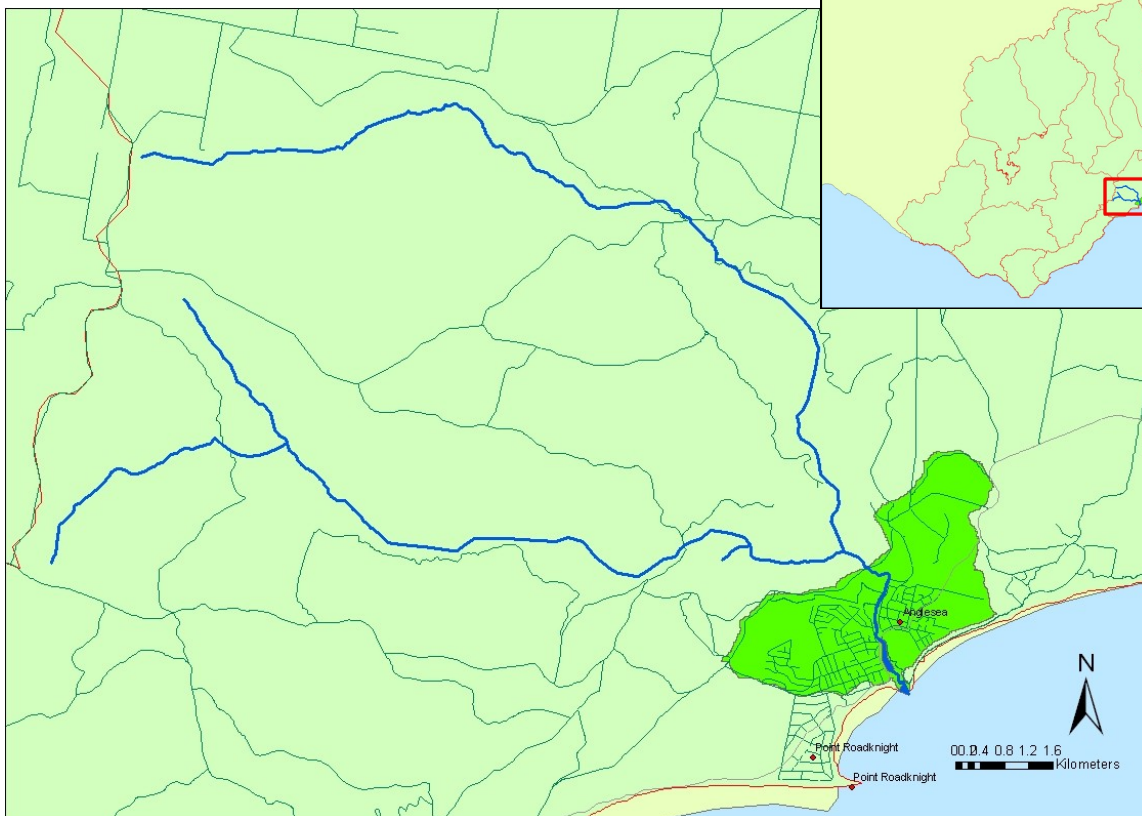


Anglesea River

Characteristics:

Type of Estuary:	River
Landscape Zone:	Thompson
Catchment Area:	885.1 Ha
Estuary Area:	11.16 Ha
Estuary Length:	2.618 km
River Length:	20.595 km
Mouth Direction:	East facing
Mouth State:	Intermittently open
Location:	144°11'28.8015" E 38°24'53.0069" S
Distance from Geelong:	32.934 km South West



Supplementary Data:

Estuary Watch
(P-Chem Data / Physical Observations)
<http://www.estuarywatch.com.au/>

Surf Coast Shire Council
<http://www.surfcoast.vic.gov.au/>

Contact Information:

Surf Coast Shire Council:
Phone: 1300 610 600
Website: www.surfcoast.vic.gov.au
Email: info@surfcoast.vic.gov.au

Anglesea River

Special Attributes

Zones:

- 63% of the catchment zoned Special Use
- 30% of the catchment zoned Public Conservation and Resource
- 2% of the catchment zoned Rural
- 2% of the catchment zoned Residential
- 4% of catchment includes zonings of Environmental Rural, Public Use, Public Park, and Recreation and Industrial

Overlays:

- Significant landscape (downstream of Coalmine Road)
- Vegetation protection (Anglesea Heath)
- Wildfire management (Anglesea Heath)



Key Management Issues:

Recreational Fishing: Estuary provides good fishing for black bream with other species including estuary perch, trevally and luderick.

Boating: Popular with amateur canoeists. A canoe hire business operates downstream of the Great Ocean Road.

Camping: Anglesea Beachfront Family Holiday Park utilises over 16 Ha of campsites and cabins and operates all year.

Point Addis Marine National Park: Estuary is in this vicinity and so is eight intermittent creeks within the catchment.

Passive Recreation: Popular place for walking, swimming and relaxing. The bush reserve of Coogoorah park, with its jetties, walking track and bridges is highly valued by the community.

Tourism: Great Ocean Road is Victoria's second most popular tourist destination, attracting between 12 and 14 per cent of all visitors within the state. Value of tourism in the GOR region is estimated at \$940 million.

Estuarine Vegetation

EVC Name	Area (Ha) (Approx.)	Geographic Occurrence	Conservation Status
Coastal Saltmarsh / Mangrove Shrubland Mosaic	3.31	N/A	Endangered
Estuarine Wetland	7.40	Minor	Endangered
Coastal Alkaline Scrub	5.93	Naturally Restricted	Endangered
Sand Heathland	9.62	Rare	Rare
Coastal Dune Scrub / Coastal Dune Grassland Mosaic	33.08	N/A	Depleted
Damp Sands Herb-rich Woodland	2.83	Naturally Restricted	Vulnerable
Lowland Forest	5.88	Common	Depleted
Heathy Woodland	147.67	Common	Least Concern
Riparian Scrub / Swampy Riparian Woodland	477.38	N/A	Depleted

