

# B7

# Barwon Estuary

## Site Access Description

Access to the site is via a locked gate at Calder Street, Whittington. A 4WD track is then followed to the site. At the fork in the track take the left fork. The site is located on a small road bridge. Stand in the middle of the road and face south.

Latitude: -38.219845  
Longitude: 144.426777  
Nearest road and Town: Calder Street, Whittington  
Tide Offset to Port Philip 02:30  
Heads:

B7\_yyyymmdd 1\_185



Map bearing: 185 °

Compass bearing: 174 °

B7\_yyyymmdd 2\_225



Map bearing: 225 °

Compass bearing: 214 °

B7\_yyyymmdd 3\_265



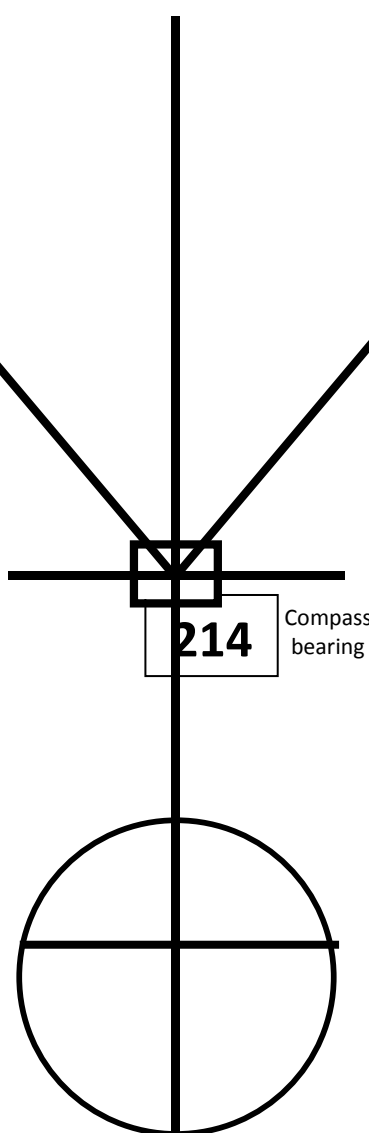
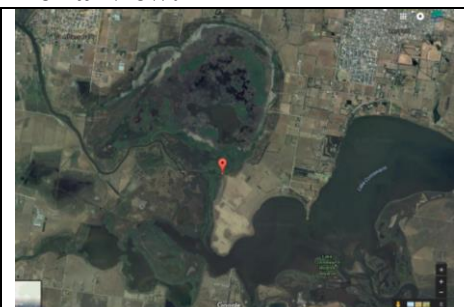
Map bearing: 265 °

Compass bearing: 254 °

### Photo of photopoint site:




### Aerial view:



## Notes:

### Bearings:

<p>The 'true' or 'map' bearing is different to the compass bearing. Magnetic North is 11° East (left, clockwise, positive) of True North.</p> <p>Compass bearing = Map bearing - 11°</p> <p>Map bearing = Compass bearing +11°</p>	 <p>North Point on all maps is True North</p> <p>Magnetic North is 11° 32' 38" East (2004)</p> <p>(2006 Melways)</p>
--	---

### Filenames:

The 'filename' format is as specified after the Estuarywatch review;

**sitecode\_yyyymmdd\_photonumber\_photomapbearing**

For example;

A photo taken on 5th June 2012 from Anglesea photopoint 1 on a compass bearing of 201° is the first (leftmost) photo. Its filename would be;

**Ap1\_20120605\_1\_212**