

B8

Barwon Estuary

Site Access Description

Access to the site is via a locked gate at Calder Street, Whittington. A 4WD track is then followed to the site. At the fork in the track take the left fork. The site is located on a small road bridge. Stand in the middle of the road and face north.

Latitude: -38.219845
Longitude: 144.426777
Nearest road and Town: Calder Street, Whittington
Tide Offset to Port Philip 02:30
Heads:




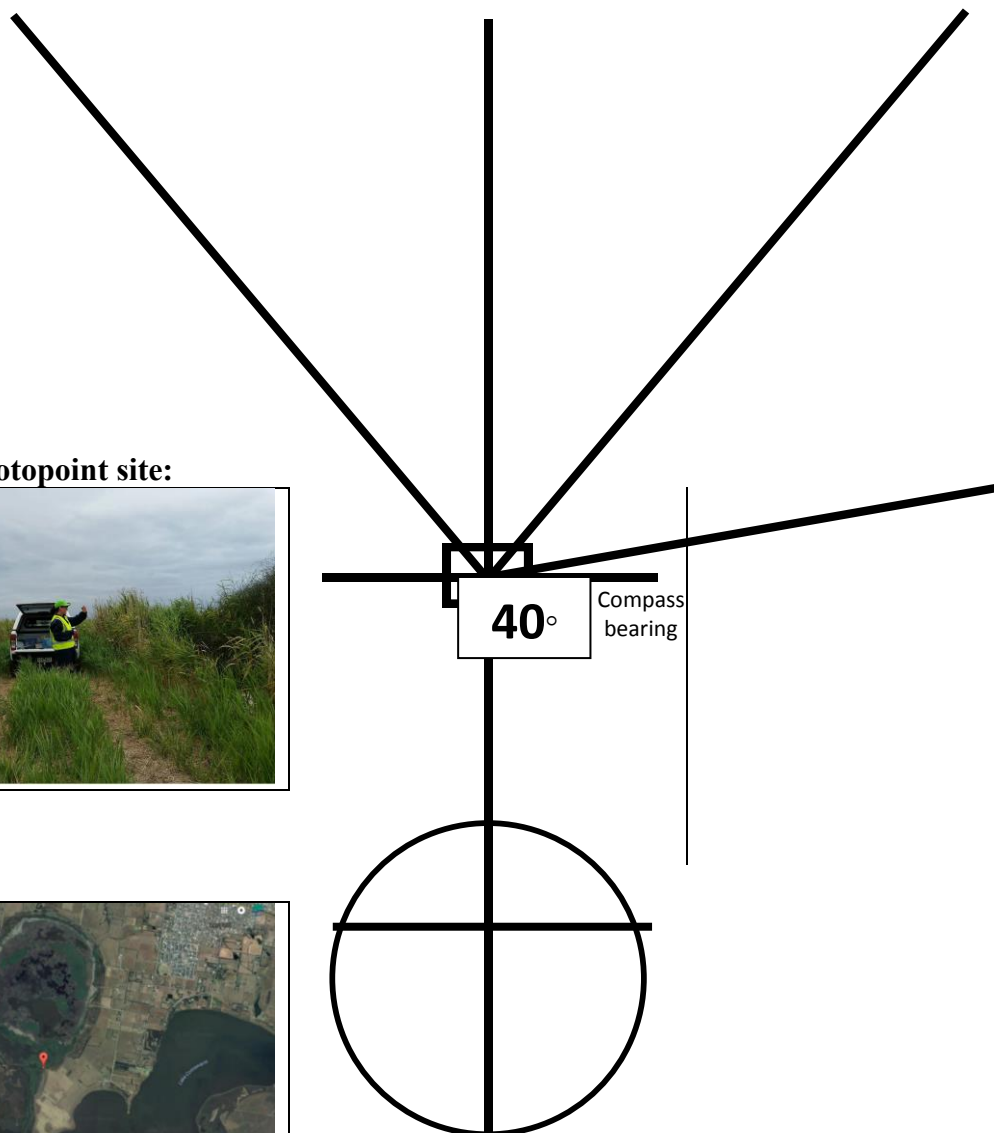
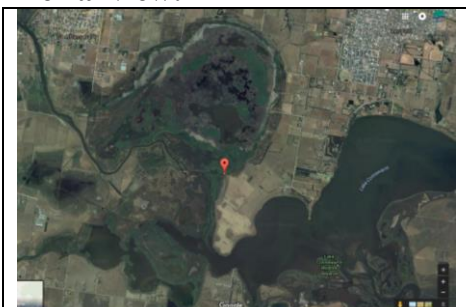
B8_yyyymmdd_1_11	B8_yyyymmdd_2_51	B8_yyyymmdd_3_91
		
Map bearing: 11° Compass bearing: 0°	Map bearing: 51° Compass bearing: 40°	Map bearing: 91° Compass bearing: 80°

Photo of photopoint site:




Aerial view:



Notes:

Bearings:

<p>The 'true' or 'map' bearing is different to the compass bearing. Magnetic North is 11° East (left, clockwise, positive) of True North.</p> <p>Compass bearing = Map bearing - 11°</p> <p>Map bearing = Compass bearing +11°</p>	 <p>North Point on all maps is True North</p> <p>Magnetic North is 11° 32' 38" East (2004)</p> <p>(2006 Melways)</p>
--	---

Filenames:

The 'filename' format is as specified after the Estuarywatch review;

sitecode_yyyymmdd_photonumber_photomapbearing

For example;

A photo taken on 5th June 2012 from Anglesea photopoint 1 on a compass bearing of 201° is the first (leftmost) photo. Its filename would be;

Ap1_20120605_1_212